

ERRATA

A Method of Estimating Resistance to Abrasion

JAN BAREŠ, *Institute of Macromolecular Chemistry, Czechoslovak Academy of Sciences, Prague, Czechoslovakia*

(article in *J. Appl. Polym. Sci.*, **14**, 1473-1475, 1970)

Equation (8) should read as follows:

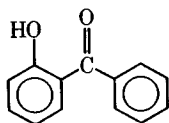
$$\alpha t = -2,303 \log \frac{P(t)}{P(t) + (k_a/k_d)} = 2,303 \log X.$$

Ultraviolet Absorbers. The Protective Ability of Aromatic Nitro Compounds in Plasticized Poly(vinyl Chloride)

ZBIGNIEW RACISZEWSKI and D. H. MULLINS, *Research and Development Department, Union Carbide Corporation, Chemicals and Plastics, South Charleston, West Virginia 25303*

(article in *J. Appl. Polym. Sci.*, **14**, 967-977, 1970)

Structure IV should read as follows:



The Dependence of the Rate of Emulsion Polymerization of Methyl Methacrylate on the Soap Concentration

P. I. LEE and H. M. LONGBOTTOM, *University of Salford, Salford M5 4WT, Lancashire, England*

(article in *J. Appl. Polym. Sci.*, **14**, 1377-1379, 1970)

The abscissa of Figure 1 should be $2 + \log \text{soap}$. The soap concentration units are mole/liter of aqueous phase, based on the formulation in Ref. 7.

In Table I under the heading "Magnitude of R_p , %/min," the column should read from top to bottom as follows: 10 to 20; 1 to 4; 1 to 3; 0 to 1.